

BY THE NUMBERS:

At Camp Friedenswald we're motivated by our values of faith, peace, stewardship, and nature as we live into our Resilience & Sustainability Plan. Over the past year and a half, with the help of volunteers, staff have taken steps towards making Camp a more resilient and sustainable place, with the hope that our collective efforts will positively impact campers (and the earth) for years to come. Here's a glimpse into the work that's taken place in 2018, by the numbers.

33,962

Kilowatt hours

33,962 kWh saved. This is a 11.2% reduction compared to 2015, equal to Camp reducing greenhouse gas emissions by 25.3 metric tons of CO₂ or 2.7 homes total energy use for a year



750

Light bulbs

750 light bulbs were either removed or changed to LED

1

Charging station

One electric car charging station installed

101

Managed acres

45.5% of Camp's natural areas managed for invasive removal or ecological restoration

58%

Diversion rate

58% of Dining Hall waste recycled or composted (according to a three day sample period)

13

Compost cubes

13 4'x4' cubes of food waste composted

4,000

Pounds

4,000 pounds of single stream recyclables recycled, equal to removing 6.42 metric tons of CO₂, removing one passenger vehicle off the road, or conserving 722 gallons of gasoline

27 :: 4

27 additional recycling containers added around Camp. Four additional composting containers (one in each lodge)

50

Mattresses

50 mattresses recycled and turned into carpet padding and archery targets

2,020

Veggie meals

2020 all-camp vegetarian meals served (1 person's meal = 1) – roughly doubled from previous years



14

Program elements

14 new programming elements focused on environmental sustainability

13

Learning opportunities

13 professional development opportunities taken by staff to learn about environmental sustainability

4

New partners

Four new partner organizations working on environmental sustainability (total = 12)

1,106

Pounds

1106 pounds of local food purchased or donated to Camp (more than double from previous years)

30

Butterflies

30 federally endangered Mitchell's satyr butterfly counted in the prairie fen during an annual survey

1

Tech policy

One technology policy created to encourage people to unplug at Camp

70

Motion sensors

70 occupancy or motion sensors installed

8

Destination points

Eight destination points completed and installed across Camp's 6.75 miles of trail systems that invite hikers to pause and consider the world around and within

828

Volunteer days

Faithful volunteers keep Camp running! Without program, kitchen, administrative, and facility help, Camp staff would not be able to accomplish all that needs to happen throughout the year. Thank you, volunteers!

975

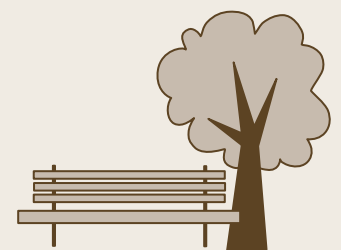
Campers

Attended 14 programmed camps throughout the year

252

Groups served

252 guest groups and over 9000 people spent time in the peaceful woods in 2018



To learn more about our progress to date, read the 2018 report in its entirety at Friedenswald.org.